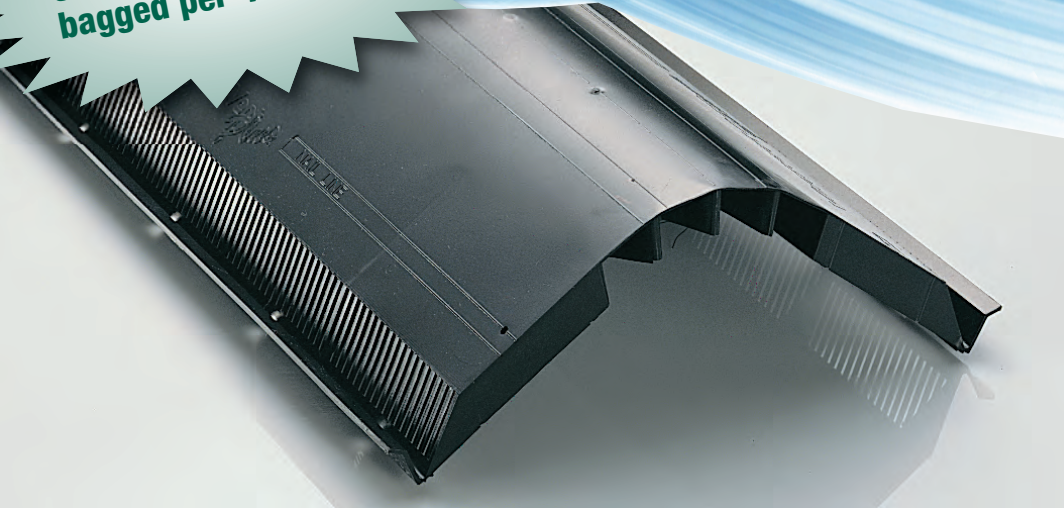


VENTURIVENT™ PLUS

Shingle-Over Ridge Vent

Available with
galvanized roofing nails
bagged per 4-foot piece



PRODUCT DETAILS

VenturiVent Plus takes ridge ventilation to a new level of performance.

VenturiVent Plus features an external baffle that maximizes airflow performance and helps protect the attic from weather infiltration. It's also designed for easy installation. Factor in the aesthetic advantages of a low-profile ridge vent and it's easy to see why VenturiVent Plus is the vent of choice by roofing professionals.



The low-profile, shingle-over look of VenturiVent Plus creates a clean, uncluttered roofline; and the vent performs better than other types of exhaust vents which are a lot more noticeable on the roof.



- 18 square inches of Net Free Area per linear foot
- 3/12 to 16/12 roof pitches
- Lifetime Limited Warranty
- Ten 4-foot pieces per box
- Includes galvanized roofing nails (*one bag of 30 roofing nails taped to each 4-foot piece*)
- Part #84719 = with nails

Also Available From Air Vent
A ridge vent for diagonal hips.
Visit airvent.com for details

Hip Ridge
vent SHINGLE-OVER HIP VENT



AIR VENT INC.





In addition to its advanced design, VenturiVent Plus incorporates these sophisticated features to ensure quality installation.

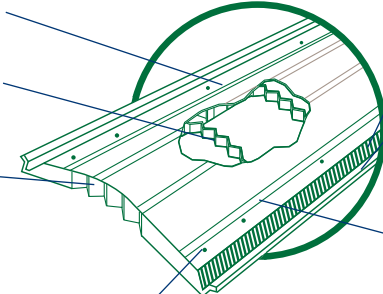
Preprinted slot guides for proper slot width and alignment.

Internal ribs add strength and stability without compromising flexibility.

Built-in ventilating end plug features a self-closing, weather-tight, hinged design.

Hinged ventilating end plug design flexes for different roof pitches without affecting the rounded radius of the vent so cap shingles lay flat over the vent to help prevent cap shingles from cracking.

Made of durable, copolymer resins so the vent remains sturdy, nailable and flexible in all climates.



Nail holes at 16" and 24" center make it easy to locate and nail through rafters.

Air slots have 18 square inches of Net Free Area per linear foot.

External wind baffle deflects wind and weather over the vent. Creates low pressure above the vent to pull air out of the attic even when the wind is not 100% perpendicular to the vent.

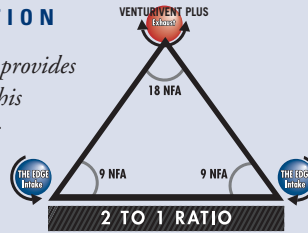
High gloss nailing lines. For fast, accurate nailing of cap shingles.

Designed with reinforced nail bosses to help prevent over nailing.

Pre-formed to a 4/12 pitch so the vent can easily flex from 3/12 to 16/12 roof pitches.

THE BALANCED SYSTEM® FOR ATTIC VENTILATION

Research has shown that the best way to ventilate an attic is with a system that provides continuous airflow along the entire underside of the roof sheathing. Achieving this desired airflow requires a balanced system of intake ventilation low at the roof's edge or in the soffit/undereaves and exhaust ventilation at the ridge.



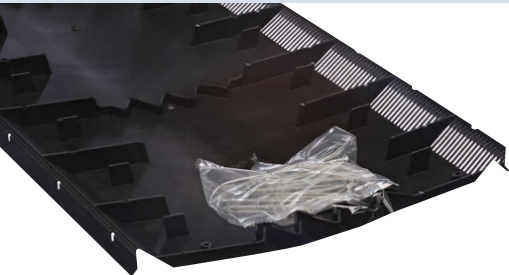
Air Vent's intake vent The Edge™ Vent perfectly balances with VenturiVent Plus. And it's easy to install.

Edge Vent features include:

- Shingle-over, roof-top installation
- 9 square inches of Net Free Area per linear foot
- 3 levels of weather protection — patented internal baffles, internal weather filter and patented drainage system



NOTE: Other intake vents available from Air Vent are Undereave Vents, Continuous Soffit Vents and Pro Flow™ Vented Drip Edge.



VenturiVent Plus (Part #84719) has 30 galvanized roofing nails bagged taped to each 4-foot piece inside the carton.

Installers will not have to hassle with removing nails that are snapped along the side of the vent prior to fastening.



4117 Pinnacle Point Drive, Suite 400, Dallas, TX 75211

800-AIR-VENT (247-8368)

www.airvent.com • ventilation@gibraltar1.com

THE BENEFITS OF RIDGE VENTILATION

Air movement is the key to efficient ventilation to help eliminate damaging conditions in your attic. Ridge vents provide constant airflow along the entire underside of the roof to help remove heat and moisture.

Attic and roof temperatures can soar as high as 160 degrees in the summer. This overheated air can damage roof structures and shingles, as well as increase cooling costs in the home. Ridge ventilation can create an airflow to remove this overheated air.

Excess moisture can be as damaging as too much heat. In today's tightly constructed homes, moisture can accumulate in the attic causing mold, mildew and wood rot. Ridge vent systems work year-round to ventilate the attic.

Heat and moisture combine to damage shingles, trusses, rafters, roof deck and painted surfaces. Ridge ventilation can help extend the life of shingles and the roof structure.

Installing a ridge vent system will validate most manufacturers' shingle warranty requirements for ventilation.



Lifetime Limited Warranty and 5-year Replacement Plus™ Protection

VenturiVent Plus is backed by a lifetime limited transferable warranty and is covered by 5-year Replacement Plus™ protection. Replacement Plus provides reimbursement for all labor costs incurred in removing any defective vent and installing the vent replacement in addition to the replacement product itself. That's protection you can count on.