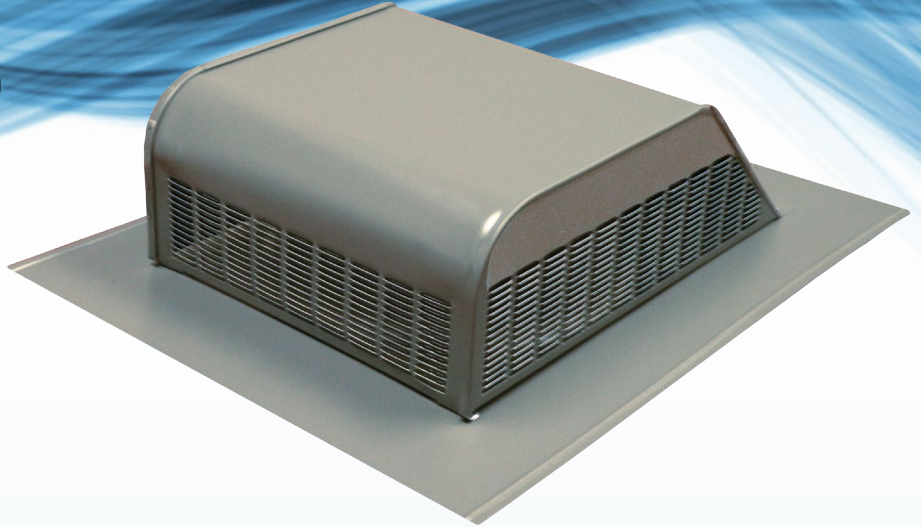
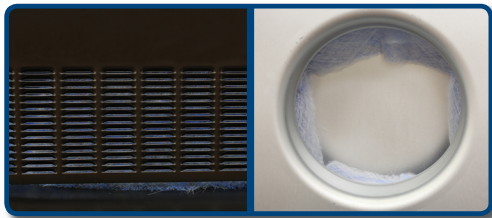


RVG55

SLANT GALVANIZED ROOF LOUVER

- Heavy-duty galvanized construction
- 9" round opening
- NFA: 50 Sq. In./Pc.
- Optional filter available



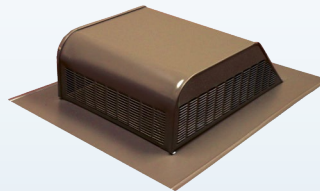
Mill



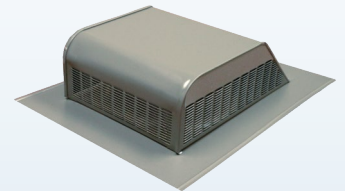
Black



Brown



Weatherwood



| Color | Model | Part No. | PCS/CTN | CTNS/Pallet |
|-------------|---------|----------|---------|-------------|
| Mill | RVG55ML | RVG55006 | 6 | 12 |
| Black | RVG55BL | RVG55016 | 6 | 12 |
| Brown | RVG55BR | RVG55086 | 6 | 12 |
| Weatherwood | RVG55WV | RVG55066 | 6 | 12 |

| Net Free Area of Vent | 1000 Sq. Ft. | 1500 Sq. Ft. | 2000 Sq. Ft. | 2500 Sq. Ft. |
|-----------------------|--------------|--------------|--------------|--------------|
| 50 Sq. in. | 5 | 8 | 10 | 12 |

- Use this chart to determine the number of vents your attic requires (minimum code requirement).
- Air Vent suggests installing more louvers than the minimum code requirement.
- 3/12 to 12/12 roof pitch.
- An attic requires an equal amount of intake (soffit) and exhaust (roof) ventilation.

