

# AIR VENT POWER VENTS

Quality-Built, Efficient Fans from the Industry Leader in Attic Ventilation

## HOW TO SIZE POWER VENTS?

Power vents are rated in *CFM* – cubic feet of air moved per minute. The higher the CFM, the more powerful the vent and the more air exchanges per hour it provides. To determine the minimum CFM required, multiply the attic square footage by 0.7. For example:

**1500 square feet x 0.7 = 1050 CFM**  
Thus, a fan rated at least 1050 CFM is needed.

## HOW MUCH INTAKE VENTILATION?

Just like any exhaust vent power vents need intake airflow to perform properly. To calculate how much intake the power vent needs simply divide the fan's CFM capacity by 300 and then convert that number to square inches.

**CFM of Power Vent** = **Sq. ft. of intake net free area needed** x **144** = **Sq. in. of intake net free area needed**

*Example:*  
**1050 CFM** = **3.5 sq. ft. of intake net free area needed** x **144** = **504 sq. in. of intake net free area needed**

## AIR VENT POWER VENTS

Product	CFM	Colors	Attic Size
Power Cool Plus 15 with automatic thermostat/humidistat	1500	Gray, Brown, Black, Weatherwood	2100 sq. ft.
Power Cool Plus 12 with automatic thermostat/humidistat	1170	Gray, Brown, Black, Weatherwood	1650 sq. ft.
Power Cool BR28 with automatic thermostat	1320	Gray, Weatherwood	1900 sq. ft.
Power Cool BR26 with automatic thermostat	1170	Steel: Gray, Brown, Black, Weatherwood Plastic: Gray, Brown, Black	1650 sq. ft.
SolarCool SC8BL solar powered with attached panel	800	Black	1200 sq. ft.
SolarCool NPSP8WW solar powered with separate panel	800	Weatherwood	1200 sq. ft.

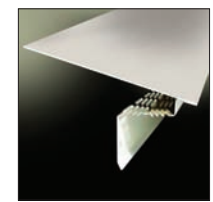
Product	CFM	Attic Size
APGH with automatic thermostat/humidistat	1620	2300 sq. ft.
WCGB with automatic thermostat	1320	1900 sq. ft.
NPSG8 solar powered	800	1200 sq. ft.

## AIR VENT INTAKE VENTS

Product	Model	Description	Colors	Size	Net Free Area
The Edge Vent	EVI	Shingle-over, roof-top installed	Black	4'	9 sq. in. per ft.
Vented Drip Edge	VDE	Aluminum	White, Mill, Brown, Black	10'	9 sq. in. per ft.
Continuous Soffit Vent	SV201	Louvered Aluminum Continuous soffit vent (Retrofit)	White, Mill, Brown	8'	9 sq. in. per ft.
	SV202	Louvered Aluminum Continuous soffit vent (New construction)	White, Mill, Brown	8'	9 sq. in. per ft.
	SP8	Perforated Aluminum	White, Mill, Brown	8'	8 sq. in. per ft.
	SV351	Perforated PVC Continuous soffit vent (Retrofit)	White, Brown	8'	9 sq. in. per ft.
	SV352	Perforated PVC Continuous soffit vent (New construction)	White	8'	9 sq. in. per ft.
Undereave Vents	EV16424	Aluminum	White, Mill, Brown	4" x 16"	28" pc
	EV16624	Aluminum	White, Mill, Brown	6" x 16"	42" pc
	EV16824	Aluminum	White, Mill, Brown	8" x 16"	56" pc



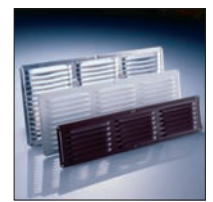
**The Edge™ Vent**  
Shingle-over, roof-top installed intake vent for homes with or without overhangs.



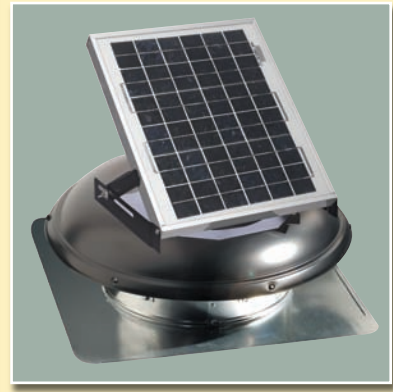
**Pro Flow™ Vented Drip Edge**  
Combines drip edge with intake vents.



**Continuous Soffit Vents**  
Plastic or aluminum.



**Undereave Vents**  
For intake venting at the eaves.



- Reduce energy costs
- Improve air quality
- Help eliminate damaging moisture
- Extend roof and shingle life

### REPLACEMENT PLUS™ PROTECTION

Replacement Plus provides reimbursement for all labor costs incurred in removing any defective vent and installing the vent replacement, in addition to the replacement product itself.

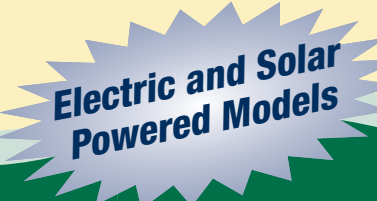


## AIR VENT INC.

4117 Pinnacle Point Drive, Suite 400, Dallas, Texas 75211  
1-800-AIR-VENT (247-8368)  
www.airvent.com • ventilation@gibraltar1.com

A GIBRALTAR INDUSTRIES COMPANY  
AVI014-9/09  
©2009 Air Vent, Inc.

## AIR VENT INC.



## ELECTRIC POWER VENTS

Electric power attic ventilators are controlled by a factory pre-wired thermostat and/or a humidistat to ensure effective ventilation as needed. They deliver cooling results faster than wind turbines and roof louvers. Power vents are available for both roof- and gable-mount applications. Roof-mount power vents are ideal for hard-to-vent hip roof applications.

### ROOF-MOUNT



#### POWER COOL PLUS™ Model PC15 with Automatic Thermostat/Humidistat

- 1500 CFM for attics up to 2100 square feet
- Heavy-duty, rust-resistant steel dome
- Lifetime limited warranty includes five-year Replacement Plus protection
- Requires 720 square inches of intake vents\*

**Dome colors available:** Gray, Brown, Black and Weatherwood

#### POWER COOL PLUS™

##### Model PC12 with Automatic Thermostat/Humidistat

- 1170 CFM for attics up to 1650 square feet
- Heavy-duty, rust-resistant steel dome
- Ten-year limited warranty includes five-year Replacement Plus protection
- Requires 562 square inches of intake vents\*

**Dome colors available:** Gray, Brown, Black and Weatherwood



#### POWER COOL™ Model BR28 with Automatic Thermostat

- 1320 CFM for attics up to 1900 square feet
- Heavy-duty, rust-resistant steel dome
- Ten-year limited warranty includes five-year Replacement Plus protection
- Requires 634 square inches of intake vents\*

**Dome colors available:** Gray and Weatherwood



#### POWER COOL™ Model BR26 with Automatic Thermostat

- 1170 CFM for attics up to 1650 square feet
- Plastic or heavy-duty, rust-resistant steel dome
- Five-year limited warranty includes two-year Replacement Plus protection
- Requires 562 square inches of intake vents\*

**Steel dome colors available:** Gray, Brown, Black and Weatherwood  
**Plastic dome colors available:** Gray, Brown and Black

### GABLE-MOUNT



Air Vent's gable-mount power vents operate 30% quieter and 35% more efficiently than comparable units. The fan blade is encased in a patented series of rings — not a cylinder like standard units. This open ring configuration allows the fan motor to move air more efficiently and with fewer restrictions. A decorative shutter, sold separately, can be painted to match the home's exterior.

##### Model APGH with Automatic Thermostat/Humidistat

- 1620 CFM for attics up to 2300 square feet
- Lifetime limited warranty includes five-year Replacement Plus protection
- Requires 778 square inches of intake vents\*

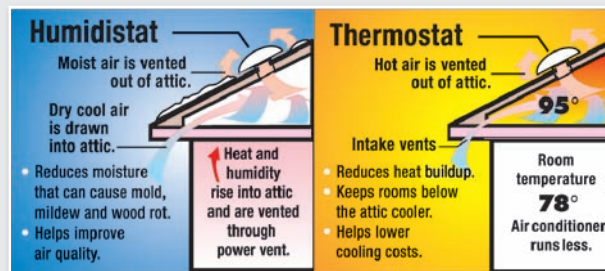
##### Model WCGB with Automatic Thermostat

- 1320 CFM for attics up to 1900 square feet
- Ten-year limited warranty includes five-year Replacement Plus protection
- Requires 634 square inches of intake vents\*

### WHY A HUMIDISTAT?



A typical family of four produces an average of 2 to 4 gallons of water vapor per day in a home. In the winter this vapor is attracted to the cooler air in the attic, where it quickly condenses. Condensation can drip onto attic insulation, reducing its effectiveness. This moisture can cause wood rot to the attic structure and promote the growth of mold and mildew, affecting the quality of the air in the home. So, for added protection, install a power vent equipped with a humidistat.



## SOLAR POWER VENTS

Roof-mount and gable-mount solar power vents are an exciting alternative to traditional attic ventilation. That's because they're powered by a solar panel that collects energy directly from the sun and converts it, naturally, to operate a durable, high efficiency 24-volt DC motor.

There's no electrical hook-up or electrical cost. They're easy to install and easy on the wallet. And that means environmentally friendly, budget-conscious operation for year-round comfort.

### ROOF-MOUNT



#### SOLARCOOL™ Model NPSP8WW with separate solar panel

- Up to 800 CFM for attics up to 1200 square feet
- Pre-painted galvanized steel dome; weatherwood
- Solar panel installs separate on the roof
- Wind, hail and impact resistant solar panel
- Five-year limited warranty includes two-year Replacement Plus protection
- Requires 384 square inches of intake vents\*



#### SOLARCOOL™ Model SC8BL with attached solar panel

- Up to 800 CFM for attics up to 1200 square feet
- Pre-painted galvanized steel dome; black
- Solar panel can be tilted and rotated for maximum sun exposure and energy collection
- Solar panel is wind, hail and impact resistant
- Five-year limited warranty includes two-year Replacement Plus protection
- Requires 384 square inches of intake vents\*

### GABLE-MOUNT



#### Model NPSG8

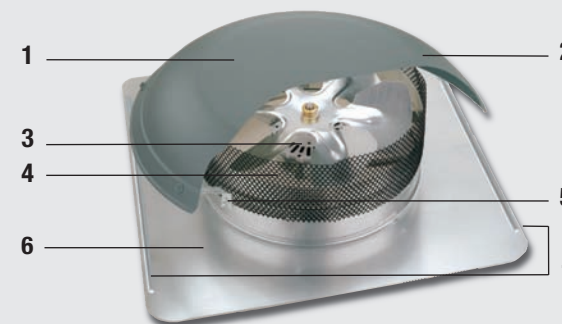
- Up to 800 CFM for attics up to 1200 square feet
- Solar panel mounts directly over the shingles
- Wind, hail and impact resistant solar panel
- Five-year limited warranty includes two-year Replacement Plus protection
- Requires 384 square inches of intake vents\*

\*Air Vent's full line of intake vents are listed on the back page.



### BUILT-IN QUALITY

You'll appreciate the quality that's built into every power vent:



- 1 Pre-painted 22-gauge galvanized steel dome is more durable than aluminum. Screws are painted to match dome color.
- 2 Raised dome for greater airflow and easier flashing.
- 3 Balanced motor for maximum CFM performance and motor efficiency.
- 4 Plastic screen has distinct advantages over metal: it won't corrode or rust and it won't vibrate or create noise.
- 5 Six brace struts hold dome firmly in place.
- 6 Oversized 24" x 24" G-90 galvanized base flange for easy nailing and flashing.
- 7 Stiffening rib improves edge sealing and adds rigidity.

\*Air Vent's full line of intake vents are listed on the back page.